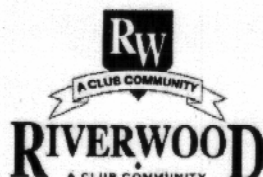


Amenities Include: a 5000 square foot clubhouse, 25 acres of walking trails, competition swimming pool, lighted tennis courts, workout facility, jazzercise room, basketball court, tot lot, putting green, pavilion with fireplace, sports field.



Standard Features HIGHLANDS

Exterior Detailing—Designed by Developer

Items with *Controlled by ACC
 Architecturally designed exterior elevations
 Professionally landscaped sodded yard with planting beds
 Carefully planned & coordinated streetscape designs
 Underground utilities
 Custom community mailbox
 Double flood lights on front and rear of home
 GFI weatherproof electrical outlets on front and rear of home
 Two exterior water faucet with shut-offs
 Poured concrete foundations reinforced with steel
 Pre-finished aluminum, seamless gutters and downspouts
 Class A fiberglass shingles (30 yr. limited warranty)
 Textured fiber concrete siding

Safety & Energy Features

High efficiency Rheem heating and air systems
 High insulation iRi factors R-13 walls, R-30 vaults and attic
 Low E insulated, thermal pane tilt sash windows with screens
 220 V outlet for dryer
 Washer overflow pans on second floor laundry rooms
 Smoke detectors on all levels
 Ceiling fan in family room
 Dead bolts on exterior room
 Programmable set-back thermostat on main floor
 Electric garage door openers
 Sheet rocked and painted garage walls
 Elongated water-saving toilets
 Pull-down attic stairs
 Structured Panel Prewire

Home Warranty

Homeowner Pre-Construction Orientation
 Homeowner Pre-Drywall Orientation
 Pre-Closing Orientation
 Warranty Introduction
 1yr Builder Warranty
 10yr Structural Warranty

Interior Detailing

Hardwoods in Foyer, Poser Room, Dining Room and kitchen
 Elegant interior doors
 Copper Creek door hardware
 Molding designed for each level
 Two-piece chair rail in dining room
 Wood-cased openings
 Architectural detailing with columns and arches (per plan)
 Nine-foot ceilings on first floor
 Two-story and trey ceilings (per plan)
 Fireplace with custom designed mantle and marble surround
 Cable TV pre-wired in family room and all bedrooms
 Telephone pre-wired in kitchen and all bedrooms
 Appliances include: gas range, microwave, dishwasher, food disposal and recessed icemaker connection
 Designer cabinets with crown molding and hidden hinges in kitchen
 Stainless steel double-bowl sink with spray
 Tile back splash in kitchens
 Moen faucets
 Cultured marble vanity tops
 Separate clear glass shower enclosures with tile walls
 Garden tub in master
 Stained oak handrails with colonial style pickets
 Ventilated shelving in closets and pantry

Full Custom Design Center For Selections & Upgrades:

A full Decorating Center is available to each customer to select upgrades, such as:
 Custom lighting selections
 Ceramic Tile
 Carpet
 Designer custom interior paint
 Cabinets
 Countertops
 Hardwoods
 Plumbing fixtures
 Media options

Tammy Bickers ~ 770.505.2558

Directions: I-75 N to Barrett Parkway (exit #269). Turn left and go approx. 6.5 miles. Turn right onto Dallas Hwy(Hwy.120)
 Travel 6 miles, take right onto E. Paulding Dr. Go 4.5 miles and turn left into Riverwood.

www.hometraditionsinc.com

Information believed accurate but not warranted.
 Prices and specifications are subject to change without prior notice.



homeTraditions
 Welcome Home

HOME BANC
 MORTGAGE CORPORATION



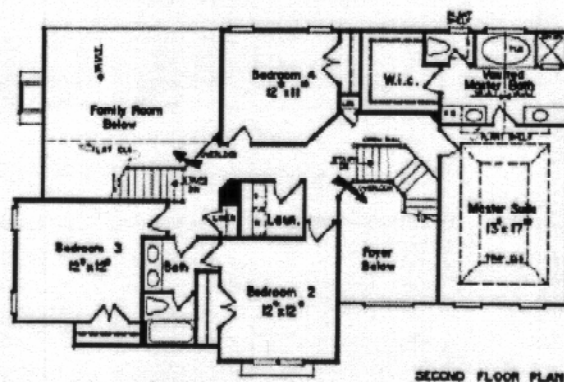
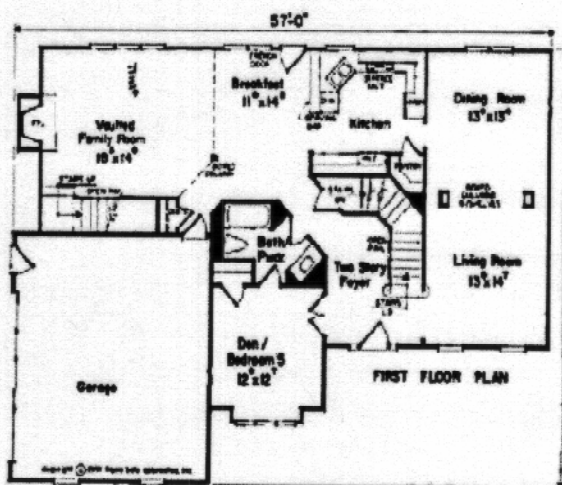


HIGHLANDS



The Haverford

W.C. Abney Elementary, Lena mae Moses Middle School and East Paulding HighSchool



Tammy Bickers ~ 770.505.2558

Directions: I-75 N to Barrett Parkway (exit #269). Turn left and go approx. 6.5 miles. Turn right onto Dallas Hwy(Hwy.120)
Travel 6 miles, take right onto E. Paulding Dr. Go 4.5 miles and turn left into Riverwood.

www.hometraditionsinc.com

Information believed accurate but not warranted.
Prices and specifications are subject to change without prior notice.

homeTraditions
Welcome Home

HOME BANC
MORTGAGE CORPORATION



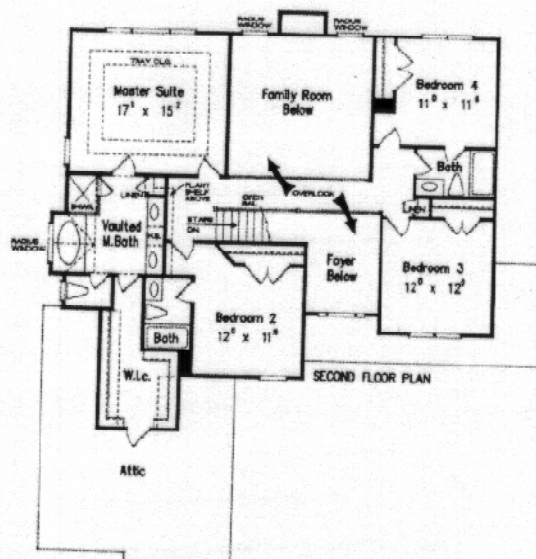
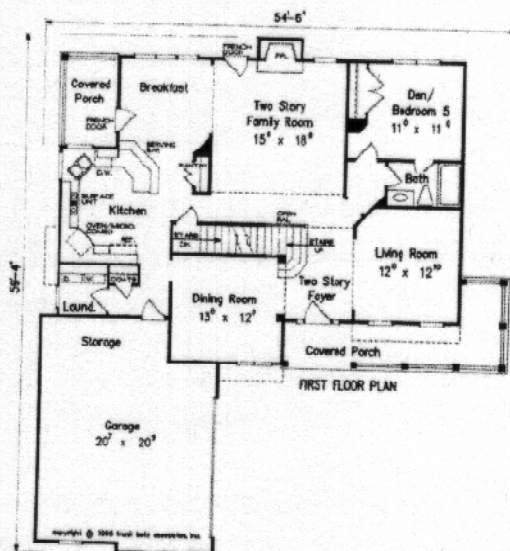


HIGHLANDS



The Kingston

W.C. Abney Elementary, Lena mae Moses Middle School and East Paulding High School



Tammy Bickers ~ 770.505.2558

Directions: I-75 N to Barrett Parkway (exit #269). Turn left and go approx. 6.5 miles. Turn right onto Dallas Hwy (Hwy.120) Travel 6 miles, take right onto E. Paulding Dr. Go 4.5 miles and turn left into Riverwood.

www.hometraditionsinc.com

Information believed accurate but not warranted.
Prices and specifications are subject to change without prior notice.



homeTraditions
Welcome Home

HOME BANC
MORTGAGE CORPORATION



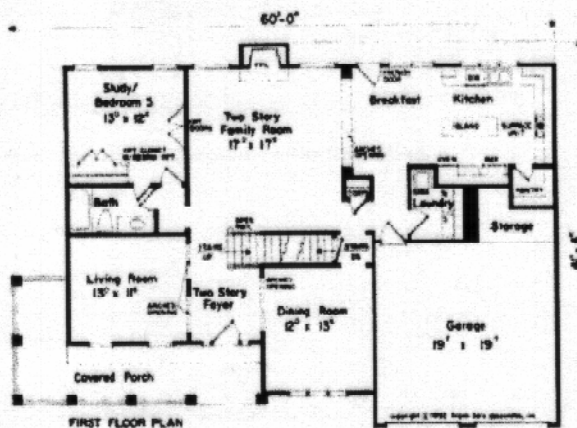
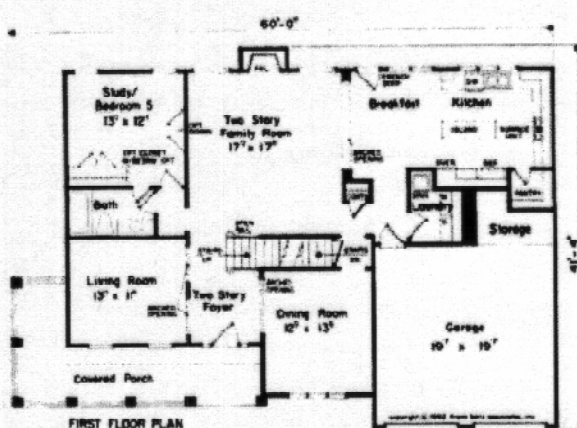


HIGHLANDS



The Maryland

W.C. Abney Elementary, Lena mae Moses Middle School and East Paulding HighSchool



Tammy Bickers ~ 770.505.2558

Directions: I-75 N to Barrett Parkway (exit #269). Turn left and go approx. 6.5 miles. Turn right onto Dallas Hwy(Hwy.120)
Travel 6 miles, take right onto E. Paulding Dr. Go 4.5 miles and turn left into Riverwood.

www.hometraditionsinc.com

Information believed accurate but not warranted.
Prices and specifications are subject to change without prior notice.



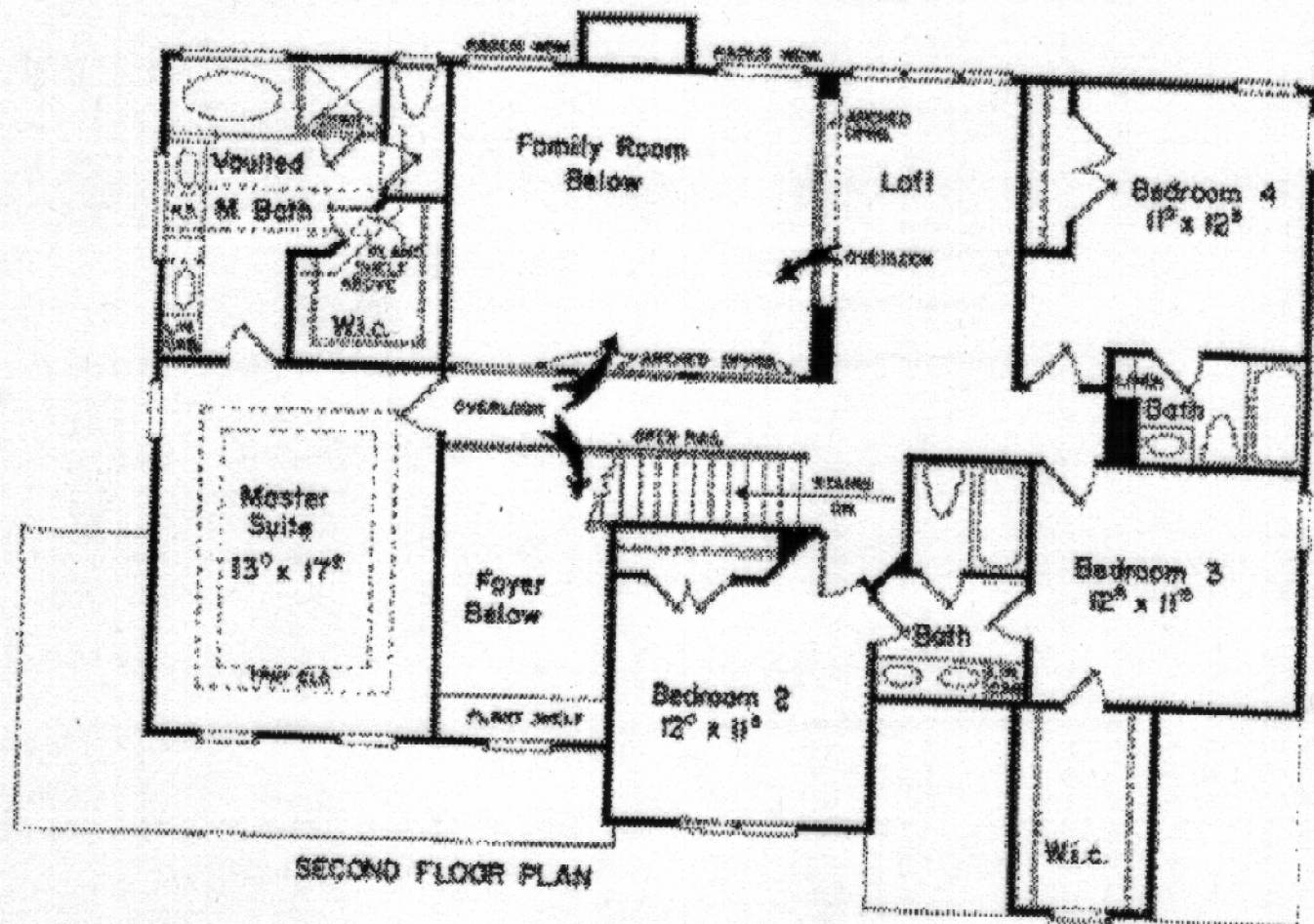
homeTraditions
Welcome Home

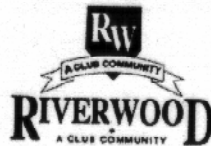


HomeBANC
MORTGAGE CORPORATION



2nd Level of Maryland



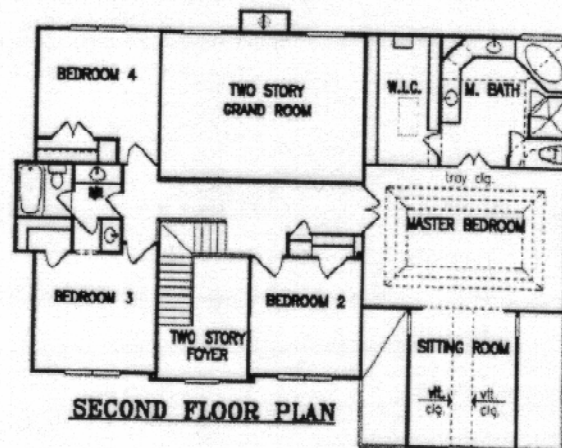
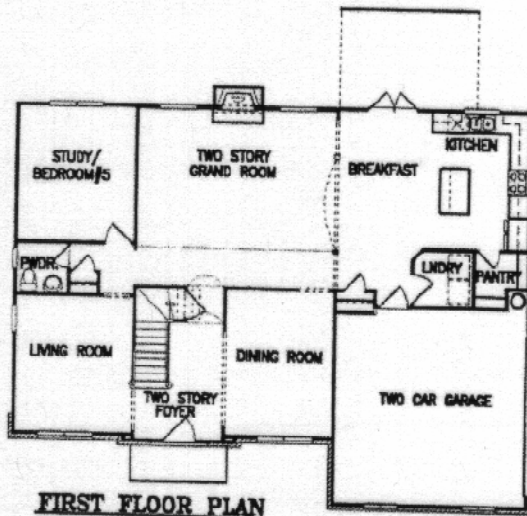


HIGHLANDS



The Berkley

W.C. Abney Elementary, Lena mae Moses Middle School and East Paulding High School



Tammy Bickers ~ 770.505.2558

Directions: I-75 N to Barrett Parkway (exit #269). Turn left and go approx. 6.5 miles. Turn right onto Dallas Hwy(Hwy.120)
Travel 6 miles, take right onto E. Paulding Dr. Go 4.5 miles and turn left into Riverwood.

www.hometraditionsinc.com

Information believed accurate but not warranted.
Prices and specifications are subject to change without prior notice.



homeTraditions
Welcome Home



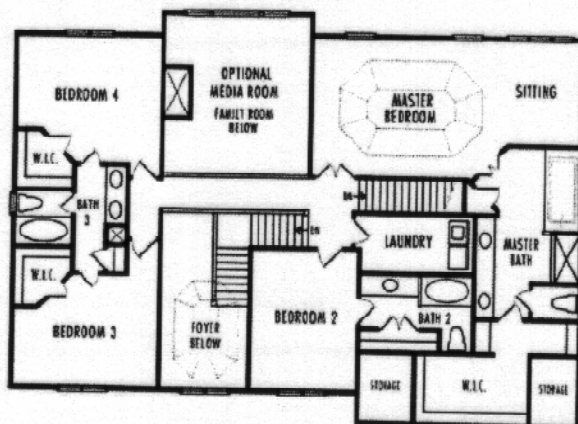
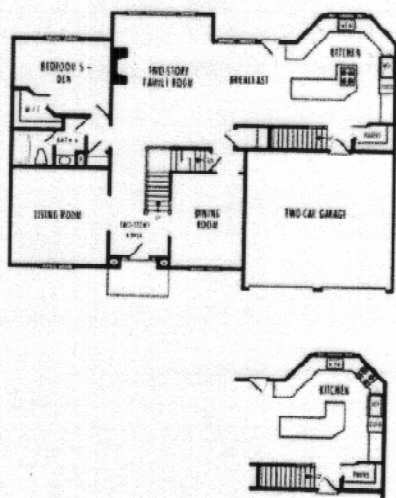


HIGHLANDS



The Virginian

W.C. Abney Elementary, Lena mae Moses Middle School and East Paulding HighSchool



Tammy Bickers ~ 770.505.2558

Directions: I-75 N to Barrett Parkway (exit #269). Turn left and go approx. 6.5 miles. Turn right onto Dallas Hwy(Hwy.120)
Travel 6 miles, take right onto E. Paulding Dr. Go 4.5 miles and turn left into Riverwood.

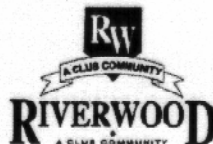
www.hometraditionsinc.com

Information believed accurate but not warranted.
Prices and specifications are subject to change without prior notice.

homeTraditions
Welcome Home

HOMEBANC
MORTGAGE CORPORATION



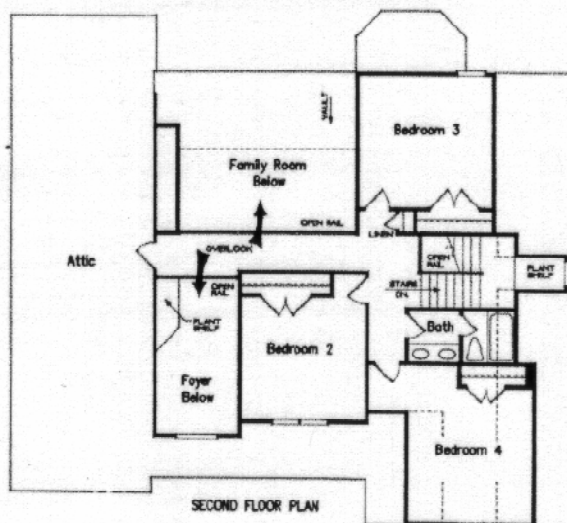
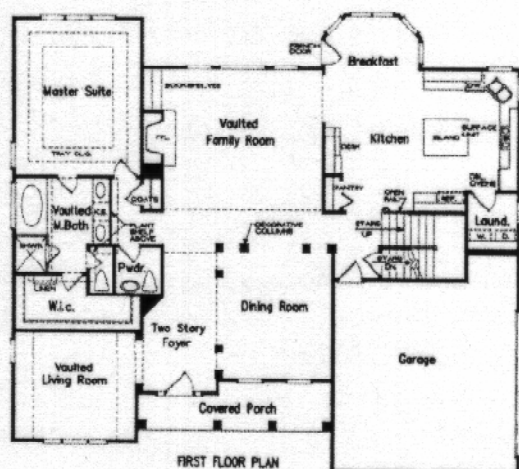


HIGHLANDS



The Balmarol

W.C. Abney Elementary, Lena mac Moses Middle School and East Paulding HighSchool



Tammy Bickers ~ 770.505.2558

Directions: I-75 N to Barrett Parkway (exit #269). Turn left and go approx. 6.5 miles. Turn right onto Dallas Hwy(Hwy.120)
Travel 6 miles, take right onto E. Paulding Dr. Go 4.5 miles and turn left into Riverwood.

www.hometraditionsinc.com

Information believed accurate but not warranted.
Prices and specifications are subject to change without prior notice.



homeTraditions
Welcome Home



HOME BANC
MORTGAGE CORPORATION



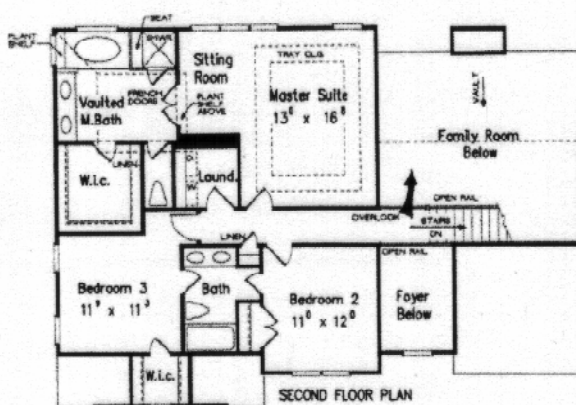
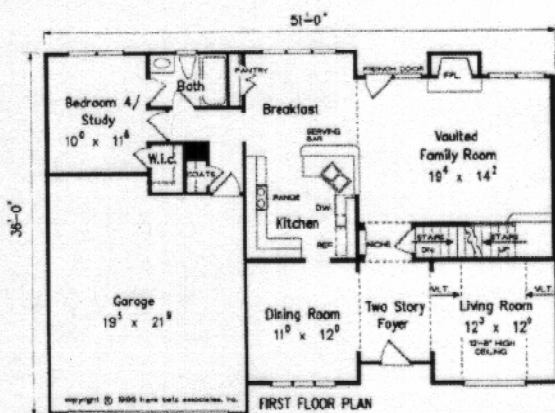


HIGHLANDS



The Whithaven

W.C. Abney Elementary, Lena mae Moses Middle School and East Paulding High School



Tammy Bickers ~ 770.505.2558

Directions: I-75 N to Barrett Parkway (exit #269). Turn left and go approx. 6.5 miles. Turn right onto Dallas Hwy (Hwy.120) Travel 6 miles, take right onto E. Paulding Dr. Go 4.5 miles and turn left into Riverwood.

www.hometraditionsinc.com

Information believed accurate but not warranted.
Prices and specifications are subject to change without prior notice.



homeTraditions
Welcome Home

HOMEBANC
MORTGAGE CORPORATION

